

CROSSWAY

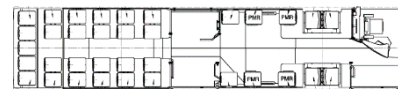
CROSSWAY LOW ENTRY 12 m (CI, CII) & 13 m (CII) – CNG EURO VI STEP E MH

IVECO
BUS
Drive the road of change



	CROSSWAY LE LINE DIESEL EURO VI STEP E	
LENGTH	12,050 mm	12,965 mm
WIDTH	2,550 mm	
HEIGHT	3,330 mm	
WHEELBASE	6,030 mm	6,945 mm
FRONT / REAR OVERHANG	2,725 / 3,295 mm	
FRONT / REAR TRACK		
INTERIOR HEIGHT (MM) (AISLE)		
FRONT / MIDDLE / REAR DOOR ACCESS HEIGHT	320 / 330 mm	
FRONT / MIDDLE / REAR DOOR WIDTH	1,200 mm	
TURNING RADIUS (CURB TO CURB)	8,870 mm	10,070 mm
INTERNAL TURNING RADIUS		
TURNING RADIUS (WALL TO WALL)	10,720 mm	11,930 mm
APPROACH / DEPARTURE ANGLES	7° / 7°	
MAX. TECHNICALLY PERMISSIBLE GVW LINE	17,900 kg	17,900 kg
MAX. TECHNICALLY PERMISSIBLE GVW CITY	19,500 kg	
MAX. TECHNICALLY PERMISSIBLE AXLE LOADS	FRONT / REAR AXLE LINE 6,300 kg / 11,600 kg	FRONT / REAR AXLE CITY 6,300 kg / 11,600 kg
	7,250 kg / 12,500 kg	
* Max allowed vehicle axles load and GVW is depending on local regulation in registration country		
	CURSOR 9	MH SYSTEM
POWER @ 2500 RPM	265 kW (360 hp) @ 2,200 rpm	25kW continuous / 35kW peak
MAX TORQUE	1,600 Nm @ 1,200 rpm	300Nm
DISPLACEMENT	8.7 litres	
	6 cylinders in line, vertical rear, Common Rail	

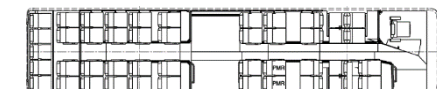
LAYOUT



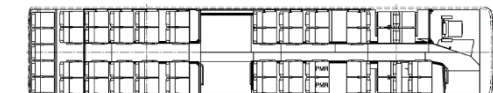
35 seats + 1 UFR



31 seats + 1 UFR



Layout 12 m: 45 passengers seats



Layout 13 m: 49 passengers seats

CROSSWAY

CROSSWAY LOW ENTRY 12 m (CI, CII) & 13 m (CII) – CNG EURO VI STEP E MH

IVECO
BUS
Drive the road of change

BODY AND EXTERIOR EQUIPMENT

- Anticorrosion cataphoretic treatment of the structure and of the body, finished with a polyurethane resin final coat
- Front door 800 mm 1 leaf, middle door 1200 mm 2 leaves, external opening
- Access to the front lights through opening corners

INTERIOR EQUIPMENT

- Self-adhesive anti-slip PVC carpet on the floor
- Lateral walls covered by laminated panels
- Roof covered by laminated panels
- Separation walls made of laminated panels
- Central platform in front of the middle door
- Internal luggage racks for passengers
- Passengers' seats LINEO
- Manual ramp for disabled persons

ELECTRICAL EQUIPMENT

- Two batteries 12 V – 225 AH
- Three alternators 150 A
- Electrical box with fuses in the front left compartment
- Internal & external LED lights
- Corner light (integrated in the fog light)
- Fire extinguishing system
- 24 V and 2x USB sockets on the dashboard

WINDOWS/ THERMAL COMFORT

- Tinted simple glass with 5 opening units (4 units for 10.8 m)
- Two roof hatches, manual control
- Four heaters for the passengers compartment
- Independent heater

DRIVER'S COMPARTMENT

- Adjustable driver's seat with air suspension, headrest, 3 pts safety belt
- Lateral and front sun visors with manual control
- Driver's separation
- On board computer with fuel consumption control
- Digital tachograph

ADAS/GSR equipment including

- Blind spot info system (optional for fareside)
- Moving off info system
- Reverse camera
- Intelligence speed assist (speed limit display)
- Driver drowsiness attention warning
- Alcohol ignition interlock device preparation

OPTIONAL

- External rearview mirrors, heated, with electrical control
- Ski carrier preparation
- Towing device preparation
- corners

OPTIONAL

- Electrical ramp for disabled persons
- Curtains on lateral windows
- Refrigerator integrated in the dashboard
- Cantilever seats

OPTIONAL

- Warning lights with open doors
- Reverse sensors
- 12 V socket on the dashboard

OPTIONAL

- Two roof hatches with electrical control
- Double glasses of the lateral and rear windows, driver's window and passengers doors
- A/C with or without heating
- Electrical defrosting of the front steps
- Electrical defrosting of the windshield

OPTIONAL

- Driver's seat with heating system
- Driver's box with lock
- Driver's refrigerator
- Additional driver's heater
- Driver's A/C
- Front sun visor with electrical control

OPTIONAL

- Blind spot info system (Left and Right)
- High beam assist
- Alcohol ignition interlock device

GEARBOX

- Automatic Voith Diwa NXT

REAR AXLE

- Single reduction hypoid rear axle equipped with "Quiet ride gears set" for low noise
- Standard axle ratio: 4,11

FRONT AXLE / STEERING

- Front axle with independent wheels suspension
- Worm-type steering with integrated power steering

SUSPENSION

- Full air suspension with self-leveling sensor
- Front: 2 combined air springs/2 shock absorbers/1 leveling sensor
- Rear: 4 air springs / 4 shock absorbers /1 stabilization bar / 2 leveling sensors

COMPRESSED AIR

- Dual cylinder air compressor 630 cm³ (pressure 9.5 bar)
- Integrated air dryer: bleeding valves on the air tanks

BRAKES

- EBS/ESP
- Pneumatic service and emergency braking system with two independent air circuits
- Brake discs, front and rear, with floating calipers and ABS
- Pneumatic parking brake, operating on the rear wheels

RETARDER

- Decompression engine brake
- Electromagnetic retarder with brake pedal control and hand lever control, Hydraulic integrated retarder

CNG TANK

- 1280 liters Class III
- CNG filling: NGV 1 & NGV 2 on right hand side

TYRES AND WHEELS

- 275/70 R 22.5 tyres
- Spare wheel carrier in the front overhang

OPTIONAL

- Axle ratio : 4,63

OPTIONAL

- Lifting/Lowering of the vehicle's suspensions
- Reinforced shock absorbers
- Kneeling

OPTIONAL

- AEB

OPTIONAL

- 1260 liters Class IV
- NGV2 behind front bumper

OPTIONAL

- With spare wheel