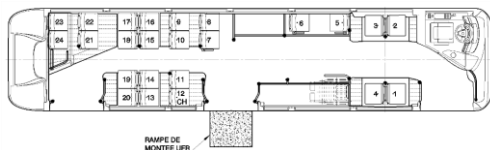




Layout 12m

24 seats + "wheelchair" space (x) driver



27 seats + "wheelchair" space (x) + driver



WEIGHTS

| | |
|-----------------------------|------------------------|
| Gross kerb weight | according to equipment |
| G.V.W. max permitted weight | 20 000 kg |

DIMENSIONS

| | |
|---|-------------------|
| Overall length Std / BRT version (in option) | 12,050 / 12,302 m |
| Overhang Std / BRT version (in option) | 2,705 / 2,957 m |
| Wheelbase | 6,120 m |
| Overall width | 2,550 m |
| Total height, full load (without/with pantograph) | 3,234/3,318 m |
| Inside headroom (front part/rear part) | 2,384/2,262 m |
| Slope of the floor (rear part only) | 7,2 % |
| 1st step height | |
| Front door | 0,320 m |
| Center & rear door | 0,330/0,340 m |
| Width of front / center / rear doors | 1,200 m |
| Floor height | 0,340 m |
| Ground clearance, under skirt | 0,300 m |
| Front/rear tracking | 2,087/1,869 m |
| Inner Turning radius | 9,095 m |
| Outer Turning radius | 10,890 m |
| Angle of attack / escape | 7,4°/7,2° |

E-WAY FULL ELECTRIC – 12m

ELECTRICAL ARCHITECTURE

Siemens ELFA 3 electric motor 290 kW max power (R85)
Max torque 3000 Nm

| | |
|--------|--|
| | NMC (Nickel Manganèse Cobalt) High energy battery |
| Serial | 346 kWh |
| Option | 416kWh, 485 kWh |

Charging system:

- CCS Combo2 plug (up to 150 kW)
- Opportunity charging with with Bottom up or Top down pantograph (up to 450 kW)

CHASSIS AND STRUCTURE -EXTERIOR TRIM

Self-supporting integral structure. Anti-corrosion treatment of chassis by cathoretic immersion

Body structure consisting in 5 panels (front/rear/left/right/top) made of welded stainless-steel sections and sheet panels

Assembling of the 5 panels to the chassis by bolting. 12mm thick plywood floor, protected by phenolic resins on both sides and wax containing resins on ground side.

Composite front and rear ends, roof and side panels. Bonded assembly.

Gravel resistant protected wheel arches. Composite front and rear bumpers in 3 parts

With or without external advertising frames

BRT options:

GX LINIUM front end

Wheel covers

ACCESS AND DOORS

2 or 3 inward swinging/sliding doors. Both leaves of front door are double glazed

Electric or Pneumatic doors

Manual or electrical 800mm access ramp on the central door

Manual or electrical left and right rear-view mirrors with self-defrosting and integrated flag holders

Camera mirrors with or without approach camera

GLAZING -HEATING -COOLING

TSA tinted or Shade-Lite panoramic laminated glass windscreen bonded on front face

Driver's window: sliding type in front part

Bonded side windows. TSA tinted glass all round or Athermal Venus Grey 40 or 35 tinted except driver's window, front door and rear window

With or without triangular windows on platform

Insulated roof

2 air exhausters on rear part of the roof

HVO or fuel or electric 20 kW or mix HVO/electric heater

1 to 3 heaters for passenger compartment

Thermal insulation for water circuit

With or without passenger and/or driver's compartment air conditioning by R134a system or CO2 Heat Pump

Thermal comfort pre-conditioning

DRIVER'S COMPARTMENT

Adjustable steering wheel (height and angle)

Air-suspended driver's seat with adjustment control on right-hand side

VDV instrument panel with warning lamps and control display panel

Interior rear-view mirrors. Left side and front sun visor

Driver's individual with 2 spotlights, luggage box

Driver's door with or without anti aggression gate

Wall behind the driver with a glazed upper part

ADAS/GSR equipment including :

- Blind spot info system
- Moving off info system
- Camera reverse
- Intelligence speed assist (speed limit display)
- Driver drowsiness attention warning
- Alcohol interlock preparation
- Tires pressure monitoring
- Emergency stop signal

INTERIOR TRIM

Wheelchair and pram space

Epoxy or stainless-steel handrails

High wear resistant floor covering up to plinths top

Laminated roof and side panels. Thermo-formed wheel arches. Polyester ceiling arches

With or without fire extinguisher

Cantilever seats

ELECTRICAL EQUIPMENT

2-off 12 V 225 A/h maintenance-free batteries mounted on a sliding support located in an outside compartment at the vehicle front left-hand side.

Converter DC/DC 600/24 V + optional 24V plug in the rear compartment

Passenger compartment lighted by leds lights

Optional atmosphere lightings

Doorstep lighting at door opening

Lighting of driver's compartment, paying position and steps

External lights with leds: parking, stop, fog, reverse, turning, and marker lights

FMS 4.0 socket

Electricity-saving system for intensive use whilst engine is off.

Thermal circuit-breakers.

Battery re-loading and engine start FENWICK socket

4 passenger's loudspeakers, 1 driver loudspeaker and 1 outside loudspeaker

Preparation for front, lateral and rear electronic destination panels

With or without flashing/stop indicators on the top of rear end

With or without complete radio equipment (Tuner, USB, Bluetooth)

With or without monoring gong for pedestrian zone

With or without Front fog lights

With or without Preparation for ITxPT

Telematics system

Cybersecurity secure logger

FRONT AXLE

8,165 tons axle

Front independent wheels

REAR AXLE

ZF AV 133

Axle torque: 7,36 (16x37)

SUSPENSION

Constant height air suspension

Kneeling and raising system 72 mm stroke) on vehicle right hand side, controlled from the driving position

COMPRESSED AIR

Pressure: 10 bars. Electric compressor (output: 400 l/min).

Single tower air dryer. Manual bleeding on the air tanks. Cyclone air cleaner. Oil separator.

BRAKES

Service brakes: air-controlled disc brakes at the front and at the rear
ABS-ASR braking system. EBS braking system
Parking brake and door brake controlled via separate circuits
Pneumatic parking brake actuated by lack of air, spring chamber on rear wheels

Service braking: electrical FAE

Brakes applied by opening of the central door

Retarder made by the electric traction motor

Manual retarder control

WHEELS AND TYRES

Michelin or Bridgestone

275/70 R 22.5 tires at the front, twin tires at the rear.

With or without wheel covers.

CERTIFICATION

In accordance with the R100-2 Regulation

In accordance with the appendix 8 of the ECE R107 Regulation and with the appendix 11 of the decree of August 3rd, 2007

Compliance with R66, R29 & R93 standards

Compliance with ISO 15-118 for smart charging